



AFRICAN MECHANICAL  
AND SUPERLIFT LTD.

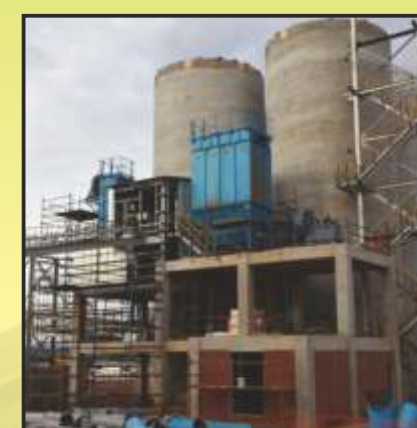


AFRICAN MECHANICAL  
AND SUPERLIFT LTD.



[info@amsl-zm.com](mailto:info@amsl-zm.com)

COMPANY BROCHURE



## WORLDWIDE PRESENCE



### OUR VISION

To rise on every occasion with **CONFIDENCE, CAPABILITY & COMPETENCE**

### OUR TARGETS

- Sustain Client's Faith & Confidence
- Provide work environment, characterized by Trust, Enthusiasm & Team Spirit for our people

## CONTENTS

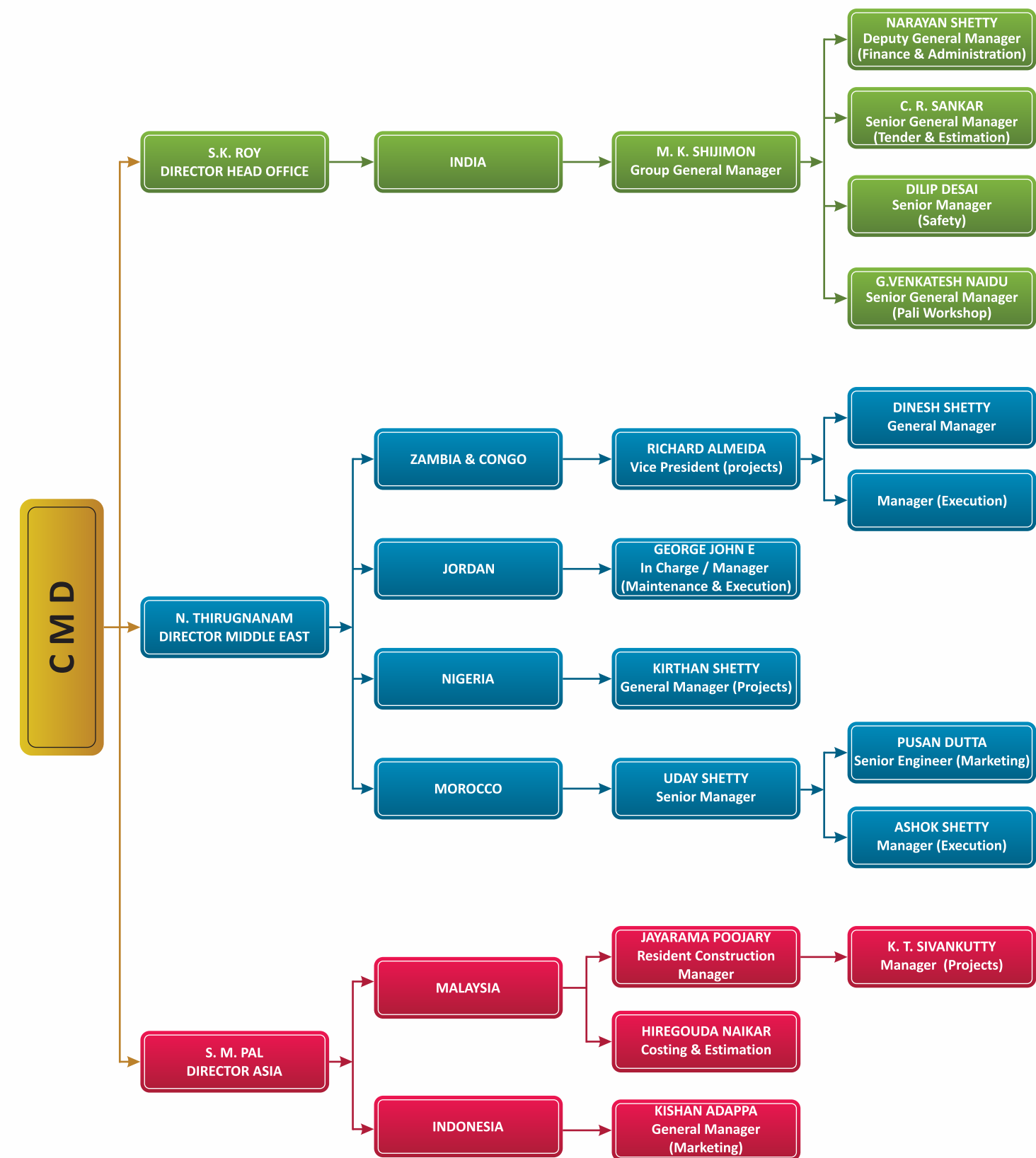
DETAILS	PG NOS
About Us	01
Organizational Structure	02
Core Team	03
Resources - Earth Moving Equipments	04
Resources - Transport Vehicles	04
Resources - Lifting Equipment	05
Resources - Equipment, Tools & Tackles	06
Major Achievements	08
Executed Projects	09
Annual Plant Operation & Maintenance Contracts	16
Ongoing Projects & Contracts	17
Quality	18
Government Appreciation	18
Environment	19
Safety	20
Site Communication	20
Certificates	21
Our Clients	22
Photo Gallery	24

*'A journey in Africa to achieve new bench marks in quality, safety, efficient operational techniques & work ethics'*

## ABOUT US

- African Mechanical and Superlift Limited (AMSL) was founded in 2008
- In this short period, AMSL has executed numerous projects in Republic of Zambia and Democratic Republic of Congo(DRC) in the areas like Smelter, Refinery, Concentrator, Sulphuric Acid plants, WTP and Tail Leaching Plants as well as Annual Maintenance Contract in the Smelters, TLP & Concentrator plants
- Our expertise is in Civil Works, Heavy and Medium structural steel fabrication, Mechanical Equipment Erection (including tall & heavy equipment in single-piece), fabrication / erection of large scale piping in CS, SS, Alloys, HDPE, PP, GRP & FRP & Small & Large diameter tanks in the Mining and other Sectors
- Since 2009 AMSL have taken up Annual Plant operation & maintenance contracts in the areas like Concentrator, Smelter, Tail Leaching Plant & other associated plant services e.g. Sulphuric Acid Plant, DM Water Plant, Oxygen Plant, ETP, etc on continuous basis
- Having executed many projects on EPC basis AMSL is ready and keen to undertake such EPC Contract in future in the Mining Industries and other Industries
- AMSL is accomplished with international standards of Health, Safety, Environment & Quality to client's satisfaction
- AMSL is confident in offering following services:
  - We own Heavy lift equipment, Earth moving equipment and Concrete construction machinery for Construction work & hiring. EPC Contracts for Structurals, Piping, Pipelines, Conveyors etc as well as offering construction services covering following expertise
  - Large scale piping & structural - Design, supply fabrication & erection
  - Heavy equipment erection
  - Design & Installation of Large dia. Storage Tanks in Mildsteel, Stainless steel & concrete
  - Design, Procurement & Installation of Belt conveyor systems
  - Fabrication & erection of refinery, oil processing, fertilizers, petrochemicals
  - Civil construction works including, road works, bridges, plant equipment foundations, stock piles, concrete tanks, housing complexes, heavy duty workshops, plant access roads etc
  - Operation & Annual plant maintenance works (includes, Mechanical, electrical, instrumentation etc.)
  - Annual manpower hiring contracts
  - Plant revamping & shut down works
  - Refractory tiling works
  - Electrical & Instrumentation construction works for different plants
  - Painting & Insulation works
  - Sheeting works

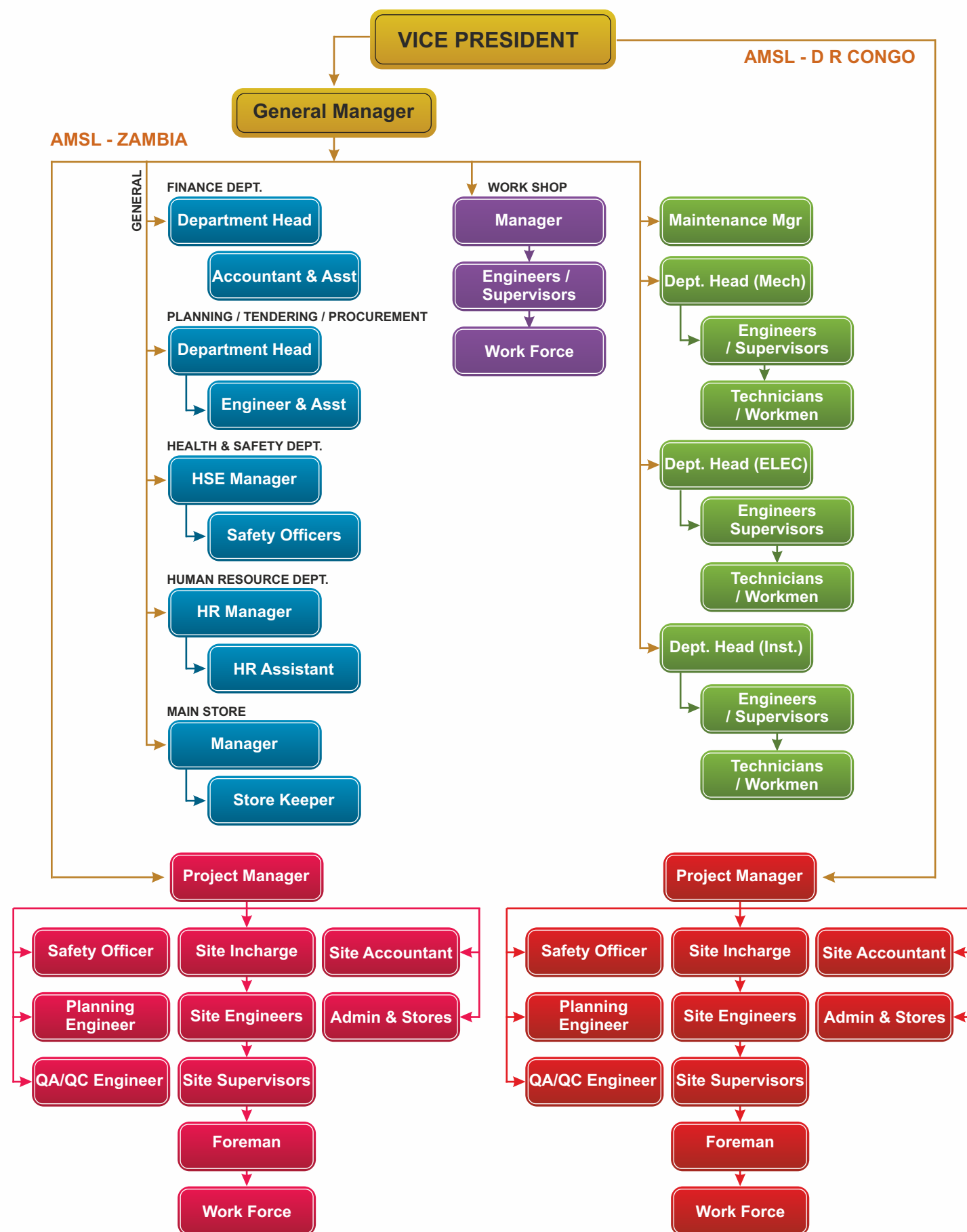
## ORGANIZATIONAL STRUCTURE



Peak Manpower ( In Nos.)

COUNTRY	INDIA	ZAMBIA	CONGO	JORDAN	MOROCCO	INDONESIA	MALAYSIA	NIGERIA
STAFF	514	147	20	101	22	35	30	200
WORKMEN	3594	998	139	667	174	400	224	1800
TOTAL	4108	1145	159	768	196	435	254	2000

## CORE TEAM



## RESOURCES - EARTH MOVING EQUIPMENTS

SN	DESCRIPTION	QTY (NOS)
01	Excavator (1.1 M3 Bucket Capacity)	06
02	Loader (3 M3)	03
03	Dumper Trucks (20/36 MT)	14
04	Dozer	03
05	Compactor (0.8 MT/8 MT/12 MT Each)	06
06	Batching Plant (25 M3 & 50 M3)	04
07	Forklift (3.5/5/7) MT	18
08	Manlift (20/30 Mtr High)	06
09	Trailer (40ft)	26
10	Hydraulic Axle (200 MT)	02
11	JCB (bacho Loader)	12
12	Paver Machine	02
13	Grader	02
14	Diesel Generator Set (25/35 KVA , 60 KVA & 125 KVA)	03 each
15	Excavator Braker (0.8-1.1 M3)	01

TI : Telescopic / TM : Tyre Mounted / CR : Crawler

## RESOURCES - TRANSPORT VEHICLES

SN	DESCRIPTION	QTY (NOS)
01	Buses (Mitsubishi Fusa Rosa)	02
02	Mini Buses (Toyota-Hiace)	05
03	Pick up (Toyota-Hilux)	12
04	Pick Up (Tata Mobile)	02
05	Multi Utility Vehicle (ISUZUMU 7)	03
06	200 MT Capacity Lowbed Hydraulic Trailer	01
07	ERF Trailer 30 MT	01
08	DAF Trailer 30 MT	01
09	Tractor With Trolly	02

## RESOURCES - LIFTING EQUIPMENT

SN	MAKE & MODEL	CAPACITY	BOOM LENGTH (MTRS)	QTY (NOS)
01	DEMAG-CC-2800(CR)	600 MT	84+84	01
02	DEMAG-CC-2400(CR)	450/800MT	72+48	01
03	AMERICAN-11320(CR)/ LIEBHERR LTM-1400(TL)	400MT	85(CR)/50(TL)	02
04	LIEBHERR LR-1350(CR)	350MT	84+84	01
05	DEMAG-TC-1200(TM)	280MT	72+54	01
06	KRUPP-KMK-7250(TL)	250MT	63+48	02
07	LIEBHERR LTM-1200(TL)	200MT	54+48	02
08	DEMAG-TC-500(TM)/DEMAG-AC-335(TL) DEMAG-HC-340(TL)/KRUPP-GMT-6140(TL) LIMA-1500-C(CR)/MAINTOWAC-4000 W(CR) DEMAG-AC-395-(TL)	125/150MT	48+15(CR) 64+46(TM) 45(TL)	08
09	LIEBHERR LTM -1100(TL)/LIEBHERR LTM-1120(TL) DEMAG-AC-265 J-(TL)	100/120MT	45+17	03
10	KOBELCO CK-800(CR)/KOBELCO-880 S(CR) P & H 1090(TM)/P & H 750(TL)/KRUPP-KMK-4080(TL) DEMAG AC 205(TL)/LIEBHERR LTM 1090(TL)	80-90MT	36+9(CR) 54+15(TM) 39(TL)	07
11	KOBELCO BM 700 (CR) KRUPP-KMK-4070 (TL)	70MT	39+9(CR) 38+16(TL)	10
12	KRUPP GMB 4060 (TL)/KOBELCO BM 600 (CR) KRUPP KMK 4060(TL) KOBELCO 7065 (CR) SUMOTO(65)	60-65MT	35(TL) 36+9(CR)	07
13	TADANO 500/550 (TL)/KRUPP KMK 3050(TL) DEMAG AC 155 (TL)/KRUPP GMK 3050 QTY 02	50MT	30	10
14	KATO NK 450 (TL) / P & H 450 (TL) / NISAK 450(CR) KRUPP KMK 3045 (TL) / P & H HXL 450(TL)	45MT	33	09
15	KRUPP GMT 25/ LIEBHERR LTM 1025 /KRUPP GMT 35	25-35MT	25	08

TL : Telescopic / Tm : Tyre Mounted / Cr : Crawler



400 MT Liebherr Make Crane



140 MT Krupp Make Crane



120 MT Liebherr Make Crane

## RESOURCES - EQUIPMENT, TOOLS & TACKLES

### MECHANICAL

SN	DESCRIPTION	QTY (NOS)
01	Air Compressor (Electrical)	08
02	Air Compressor (Diesel)	04
03	Welding Rectifier	160
04	SAW Welding Machine	04
05	Stress Relieving Machine	02
06	Sandblasting Unit	08
07	Allcut Drill Machine	20
08	AG7 Grinding Machine	90
09	AG5 Grinding Machine	75
10	AG9 Grinding Machine	15
11	Argon Torch Set (220 Amps)	35
12	Conveyor Belt Valcunizing Machine	01
13	CC HU 14 Pipe Cutting Machine	25
14	Electrical Winch Machine	04
15	Lathe Machine	03
16	Laser Alignment System	02
17	Airless Spray Painting Machine	08
18	Mother Oven	08
19	MIG Welding Machine	05
20	HDPE Fusion Welding Machine	06
21	Plasma Cutting Machine	03
22	Chain Blocks (1 MT to 10 MT)	75
23	Hydraulic Jack (25 MT to 200 MT)	28
24	PUG Cutting Machine	12
25	Plate Rolling Machine	03
26	Pipe Rotater Machine With Set	01
27	Shaper Machine	01
28	X-Ray Viewer Machine	03

## RESOURCES - EQUIPMENT, TOOLS & TACKLES

### CIVIL

SN	DESCRIPTION	QTY (NOS)
01	Batching Plant	01
02	Concrete Pump	01
03	Excavator	02
04	Steel Rod Cutting Machine	02
05	Steel Rod Bending Machine	02
06	Vibrator	05
07	Compactor	04
08	Vibrating Poker	05
09	Electrical Jack Hammer	05
10	Pneumatic Jack Hammer	04
11	Core Drilling Machine	02
12	Tipper Truck	03
13	Transit Mixer	02
14	De-Watering Pump	04
15	Ply Cutting Machine	08
16	Cube Test Mould	15
17	Cube Testing Machine	01



Transit Mixer



Batching Plant



Tipper Truck

## MAJOR ACHIEVEMENTS

KCM Smelter Projects

TLP Debottlenecking Project

CRF 02 Installation

EPC - H2so4 Storage Tank Project

MBE Concentrator Project + Scorpio Conveyor

Mufulira Acid Plant Project

PS01, 02 and 03 Converter Structure, Ducting and Equipment Installation

Winder House Projects

Crusher Replacement Work (Nchanga)

Wartsila Power Plant Project

Ndola Energy Power Plant

Ndola Handymans Lime Plant Project

MCM Mufulira Refinery Modernization Project



Dismantling Of Superheater At Ruashi Mining SPRL, D R Congo



4000T Acid Storage Tank For Ruashi Mining SPRL, D R Congo



Twin Cyclones For ASFD, Mutanda Mining SPRL, D R Congo

## EXECUTED PROJECTS

SN	CLIENT	DESCRIPTION	YEAR
01	<b>Konkola Copper Mines Plc</b> Private Bag : KCM (C) 2000 Fern-Avenue, Chingola, Zambia	Erection of Structural Steel, Technological equipment, Related Piping & Ducting work, Electrical Furnaces & Accessories for Copper Smelter in Chingola, Zambia	2008
02	<b>Mopani Copper Mines Plc</b> Central Street, Nkana West, RO. Box 22000, Corporate Office - Kitwe, Zambia	Supply, fabrication & erection of Wash Tanks (3 nos) & Settler Tank (1 no) at Kitwe, Nkana	2010 / 2011
03	<b>Alstom Engineering (Pty) Ltd</b> Alstom Power Energy Recovery GmBH, Kassel/DusselDorf, Germany	Dismantling & Re-installation of Waste Heat Boiler panels	2010
04	<b>Konkola Copper Mines Plc</b> Private Bag : KCM (C) 2000 Fern-Avenue, Chingola, Zambia	Supply & Installation of Koepe winder building at KDMP, Chililabombwe (under GLTA Supervision)	2010
05	<b>Konkola Copper Mines Plc</b> Private Bag : KCM (C) 2000 Fern-Avenue, Chingola, Zambia	Dismantling of Old Metso Crusher at East Mill & Installation of New Crusher within the stipulated period (18 days)	2010
06	<b>Konkola Copper Mines Plc</b> Private Bag : KCM (C) 2000 Fern-Avenue, Chingola, Zambia	EPC Project of Sulphuric Acid Storage with 2 nos. 27m dia tank, connected pump house, electrical sub-station / control room and long distant pipe lines to Sulphuric Acid Plant with auto level control & truck loading bay	2010
07	<b>Konkola Copper Mines Plc</b> Private Bag : KCM (C) 2000 Fern-Avenue, Chingola, Zambia	Design, fabrication & erection of 32m dia SS North/South Raffinate Tank at TLP-4	2010



SCF & CRF Furnace Erection at Smelter



Main Frame Erection of New Crusher



SS & Cu Piping at Smelter

## EXECUTED PROJECTS

SN	CLIENT	DESCRIPTION	YEAR
08	<b>Wartsila Finland OY,</b> Stand No.176, Parirenyatwa Road, Rhodes Park, Lusaka, Zambia	Structural Material Supply, Fabrication, Erection & Installation Works For Konkola Copper Mines 24.150 MW Engine Power Plant, Chililabombwe, Zambia. (Includes Erection Of DG Sets, HFO Storage Tanks, Cooling Tower With Associated Piping & Ducting Work For Power Plant)	2010 / 2011
09	<b>Konkola Copper Mines Plc</b> Private Bag : KCM (C) 2000 Fern-Avenue, Chingola, Zambia	Dismantling and Installation of 32Mtr. Dia SS North and South Pregnante Leach Tanks @ TLP SX, Nchanga KCM	2011
10	<b>Konkola Copper Mines Plc</b> Private Bag : KCM (C) 2000 Fern-Avenue, Chingola, Zambia	Fabrication & erection of Anode Bay Extension (in str. steel) in Nchanga	2010
11	<b>Konkola Copper Mines Plc</b> Private Bag : KCM (C) 2000 Fern-Avenue, Chingola, Zambia	Civil Work, Supply and Execution works for New Concentrator expansion project	2011
12	<b>Konkola Copper Mines Plc</b> Private Bag : KCM (C) 2000 Fern-Avenue, Chingola, Zambia	Civil Works for TLP-4 Project at Nchanga	2011
13	<b>Konkola Copper Mines Plc</b> Private Bag : KCM (C) 2000 Fern-Avenue, Chingola, Zambia	Heavy Sch pipe fabrication works for KDMP, KCM, Chililabombwe (under GLTA Supervision)	2009 / 2010
14	<b>Konkola Copper Mines Plc</b> Private Bag : KCM (C) 2000 Fern-Avenue, Chingola, Zambia	Fabrication, erection of Heavy Schedule Clear Water Shaft Piping including Supply & fabrication of supports brackets at KDMP, Chililabombwe (under GLTA Supervision)	2011



Crusher Spider Assembly at KCM Zambia



Sulphuric Acid Tank at KCM Zambia



W20V32 Engine generator set for Wartsila project, Zambia

## EXECUTED PROJECTS

SN	CLIENT	DESCRIPTION	YEAR
15	<b>MBE Minerals Zambia Ltd</b> Plot No.1051, Akazipo Trading area, P O BOX : Mt88, Kitwe, Zambia	New Concentrator expansion project including - Fabrication & erection of Tanks (Rougher tailing sump, conditioning tank etc) Piping & Steel Structures and Installation of Mechanical equipments	2011 / 2012
16	<b>Mopani Copper Mines Plc</b> Central Street, Nkana West, RO. Box 22000, Corporate Office - Kitwe, Zambia	Supply, Fabrication & Erection of Roof Structure, SS Sheeting, Offgas Duct Support and PS2 Main Building for Smelter Upgradation Project at Muflira	2012
17	<b>Konkola Copper Mines Plc</b> <b>Private Bag</b> : KCM (C) 2000 Fern-Avenue, Chingola, Zambia	Erection of Furnaces & related equipment & Piping, Structural & Conveyor work on EPC basis for Cobalt Recovery Furnace	2012
18	<b>Konkola Copper Mines Plc</b> <b>Private Bag</b> : KCM (C) 2000 Fern-Avenue, Chingola, Zambia	Fabrication & Erection of 2 nos. Conditioner Tanks at KDMP, Chililabombwe	2012
19	<b>Konkola Copper Mines Plc</b> <b>Private Bag</b> : KCM (C) 2000 Fern-Avenue, Chingola, Zambia	1.2 KM long Scorpio Conveyor & Structural mechanical equipment, transfer tower, crusher, Apron feeder & other miscellaneous work at East Mill Concentrator, Nchanga	2012
20	<b>Lumwana Mining Company Ltd</b> , P.O. Box 110199, Mwinilunga Road, Lumwana East, Solwezi, Rep. of Zambia.	3 nos. Contracts (April, May & June 2012) for Mechanical works for Rougher Cells during 7 day's shutdown at Lumwana Mines, Zambia	2012
21	<b>MBE Minerals Zambia Ltd</b> Plot No.1051, Akazipo Trading area, P O BOX : Mt88, Kitwe, Zambia	Fabrication and installation of tailing pipe rack at flotation / thickener area, West mill, Nchanga, KCM	2012



Anode Bay Extension for New Smelter, KCM



Cobalt Hydroxide Dryer For ASFD at Mutanda Mining, Kolwezi, D R Congo



Structure Erection in Nkana, KCM

## EXECUTED PROJECTS

SN	CLIENT	DESCRIPTION	YEAR
22	<b>Konkola Copper Mines Plc</b> <b>Private Bag</b> : KCM (C) 2000 Fern-Avenue, Chingola, Zambia	TLP4 de-bottlenecking project (Supply, Fabrication & Installation of CS, SS & HDPE Pipe as per SNC Lavalin Design)	2012
23	<b>Konkola Copper Mines Plc</b> <b>Private Bag</b> : KCM (C) 2000 Fern-Avenue, Chingola, Zambia	Civil works for Nchanga New Concentrator	2012
24	<b>MBE Minerals Zambia Ltd</b> Plot No.1051, Akazipo Trading area, P O BOX : Mt88, Kitwe, Zambia	New concentrator installation project (including structural works, mechanical equipment installation, Ball Mill, SAG Mill, COSP, Flotation Cells, piping etc) @ East mill, Nchanga, KCM	2012
25	<b>Mineral Chemical Supplier,</b> SPRL, D R Congo	Civil works for agitated spin flash dryer for Ruashi Mining SPRL, D R Congo	2013
26	<b>Mopani Copper Mines Plc</b> Central Street, Nkana West, RO. Box 22000, Corporate Office - Kitwe, Zambia	Structural works for PS-02 Converter Ducting & Mechanical Equipment Installation @ Mufulira, MCM	2013
27	<b>Mineral Chemical Supplier,</b> SPRL, D R Congo	Structural, Mechanical Equipments, HP & LP Steam Piping and other piping works for Agitator Spin flash dryer for Ruashi Mining, D.R Congo	2013
28	<b>Konkola Copper Mines Plc</b> <b>Private Bag</b> : KCM (C) 2000 Fern-Avenue, Chingola, Zambia	Mechanical installation works for Scrap melting furnace @ Nkana Refinery , Nkana, KCM	2013



Cast Wheel Exhaust Duct, Nkana, KCM



Heavy Schedule Pipe Fabrication



HDPE Pipe Erection at TLP, KCM



## EXECUTED PROJECTS

SN	CLIENT	DESCRIPTION	YEAR
29	<b>Konkola Copper Mines Plc Private Bag</b> : KCM (C) 2000 Fern-Avenue, Chingola, Zambia	Design, Fabrication & Erection of North & South PLS & Advance Tank at TLP	2013
30	<b>Konkola Copper Mines Plc Private Bag</b> : KCM (C) 2000 Fern-Avenue, Chingola, Zambia	Installation of Coke conveyer System for Smelter (Transweigh conveyer), Nchanga, KCM	2013
31	<b>Ndola Energy Ltd, Zambia</b>	Installation of 50 MW Wartsila (HFO) Power Plant which includes 350 Metric Ton structural steel erection, 2700 Sq metres cladding & 300 MT Equipment erection, Fabrication & Erection of Fuel tanks, workshop building, Ducting & exhaust Stack	2013
32	<b>Mopani Copper Mines Plc Central Street, Nkana West, RO. Box 22000, Corporate Office - Kitwe, Zambia</b>	Supply & Installation of Two Acid Storage Tank of 2,356 TPD Sulphuric Acid Plant at Mufulira Mines	2014
33	<b>Mopani Copper Mines Plc Central Street, Nkana West, RO. Box 22000, Corporate Office - Kitwe, Zambia</b>	Supply, Fabrication & Erection of Interconnecting Duct structures, ISBL, and OSBL Structures, Stack for Sulphuric Acid Plant at Mufulira	2014
34	<b>Mopani Copper Mines Plc Central Street, Nkana West, RO. Box 22000, Corporate Office - Kitwe, Zambia</b>	Supply & Installation of CS & SS Utility piping & Erection of RTRP & CPVC piping for Sulphuric Acid Plant	2014



Ducting for Ndola Energy Co. Ltd.



Engine hall for Ndola Energy Co. Ltd.



Cobalt Recovery Furnace (CRF) for KCM

## EXECUTED PROJECTS

SN	CLIENT	DESCRIPTION	YEAR
35	<b>Ruashi Mining SPRL, D R Congo</b>	Supply, Fabrication & Erection of Sulphuric acid tank	2013
36	<b>Mopani Copper Mines Plc Central Street, Nkana West, RO. Box 22000, Corporate Office - Kitwe, Zambia</b>	Erection of Equipment & Ducting, Hiring of Cranes & Heavy Rigging Cranes for Sulphuric Acid Plant	2014
37	<b>Mutanda Mining SPRL, D R Congo</b>	Fabrication of Process Equipment like Bag Filters, Twin Cyclone, Spin Ducts & Powder Ducting, Erection of Equipment, Structural building, Steam Piping, Fabrication of Conveyors gantry, 90 KL Diesel Tank - 4 nos. on EPC basis for Cobalt Hydroxide Dryer	2013
38	<b>CNMC Luanshya Copper Mines PLC, Zambia</b>	Tanks fabrication-installation project @ Muliashi Leach Plant	2014
39	<b>Mopani Copper Mines Plc Central Street, Nkana West, RO. Box 22000, Corporate Office - Kitwe, Zambia</b>	Erection of automatic anode, cathode stripping & processing machines @ Refinery, Mufulira	2015
40	<b>Mopani Copper Mines Plc Central Street, Nkana West, RO. Box 22000, Corporate Office - Kitwe, Zambia</b>	ABS Piping -Refinery tank house 1, 4 & 5 - Circulation Piping phase 2	2015



Offgas System for CRF, KCM



Bag Filter Inter Connecting Duct Assembly For ASFD at Mutanda Mining, Kolwezi, D R Congo



Feed Conveyors For ASFD at Mutanda Mining, Kolwezi, D R Congo

## EXECUTED PROJECTS

SN	CLIENT	DESCRIPTION	YEAR
41	<b>Mopani Copper Mines Plc</b> Central Street, Nkana West, RO. Box 22000, Corporate Office - Kitwe, Zambia	Utility piping - Supply-Fabrication-Installation of piping for Refinery @ Mufulira	2015
42	<b>Mopani Copper Mines Plc</b> Central Street, Nkana West, RO. Box 22000, Corporate Office - Kitwe, Zambia	Structural installation for MCC building	2015
43	<b>Mopani Copper Mines Plc</b> Central Street, Nkana West, RO. Box 22000, Corporate Office - Kitwe, Zambia	Supply-Fabrication and Installation of ABS piping for Tank house	2015
44	<b>Konkola Copper Mines Plc Private Bag : KCM © 2000</b> Fern-Avenue, Chingola, Zambia	500TPD Acid Plant Maintenance	2015
45	<b>Mopani Copper Mines Plc</b> Central Street, Nkana West, RO. Box 22000, Corporate Office - Kitwe, Zambia	Supply of ABS Pipes and fittings spares for Phase - 01 & 02	2015



Conveyor (W1) at East Mill,  
Nchanga, KCM



Acid Contact Area In Sulphuric Acid Plant  
at Mopani Copper Mines, mufulira, Zambia



Hot Gas Ducts At Sulphuric Acid Plant,  
Mopani Copper Mines, Mufulira, Zambia



FRP Ducting at Sulphuric Acid Plant,  
Mopani Copper Mines, Mufulira, Zambia



Flotation Cells At East Mill In Concentrator  
at KCM, Zambia



Concrete Flooring And Column Foundations,  
MCC Building at Concentrator, KCM, Zambia

## ANNUAL PLANT OPERATION & MAINTENANCE CONTRACTS For Mechanical, Electrical & Instruments

### EXECUTED CONTRACTS

SN	CLIENT	DESCRIPTION	YEAR
01	<b>Konkola Copper Mines Plc Private Bag : KCM 2000</b> Fern-Avenue, Chingola, Zambia	For Copper Refinery at Kitwe	2010 & 2011
02	<b>Konkola Copper Mines Plc Private Bag : KCM 2000</b> Fern-Avenue, Chingola, Zambia	For Smelter, Acid Plant, DMW Plant, Oxygen Plant, ETP at Nchanga, Chingola	2011
03	<b>FLSmith (Z) Ltd</b> 8 Pope Drive, Chingola, Zambia	For Concentrator including Dismantling and Overhauling of Heavy Mechanical Equipment	2011
04	<b>Konkola Copper Mines Plc Private Bag : KCM 2000</b> Fern-Avenue, Chingola, Zambia	For Tail Leaching Plant, Muntimpa	2011 / 2012

## ONGOING PROJECTS & CONTRACTS

SN	CLIENT	WORK DESCRIPTION
01	<b>Mopani Copper Mines Plc</b> Central Street, Nkana West, RO. Box 22000, Corporate Office - Kitwe, Zambia	Winder House Structural works @ Mindola mines - Kitwe
02	<b>Mopani Copper Mines Plc</b> Central Street, Nkana West, RO. Box 22000, Corporate Office - Kitwe, Zambia	Winder House Structural works @ Mufulira mines - Mufulira
03	<b>ThyssenKrupp Engg (Pty) Ltd</b>	Mechanical Installation & Thermal Insulation work for Handyfa's Lime Plant @ Ndola
04	<b>Konkola Copper Mines Plc Private Bag : KCM 2000</b> Fern-Avenue, Chingola, Zambia	Settler rehabilitation-installation 05 settlers
05	<b>Limeco Resources Ltd</b>	Supply, Fabrication and Delivery of Connecting chute, 02 way manual gates, Discharge chute
06	<b>Konkola Copper Mines Plc Private Bag : KCM 2000</b> Fern-Avenue, Chingola, Zambia	Erection works at 1010 ML loading complex & Double deck platform @ Shaft # 4
07	<b>Mopani Copper Mines Plc</b> Central Street, Nkana West, RO. Box 22000, Corporate Office - Kitwe, Zambia	Carry out Mechanical repair works no.6 Anode Furnace

## QUALITY

Our intention is to establish, implement and maintain good quality system at their project sites aimed at continual improvement through a centralized dedicated Quality Management.

Quality assurance measures are formulated in accordance with guide lines given in ISO 9001:2008, as well as with companies well defined Quality Assurance Plan & Quality manual. In addition, Client's QA Policy & norms for specific projects are followed strictly.

Quality control at each job sites is executed by assigning a dedicated and full time QA team, headed by an experienced Quality Manager. Constant interaction with Client's Quality representative and / or Third Party Inspection agency (if deployed) are maintained throughout the job execution.

We identify quality standards, expectation of customers, the project, organization and define customer and project goals, quality standards, critical success factors and outline acceptance criteria for project deliverables and performance.

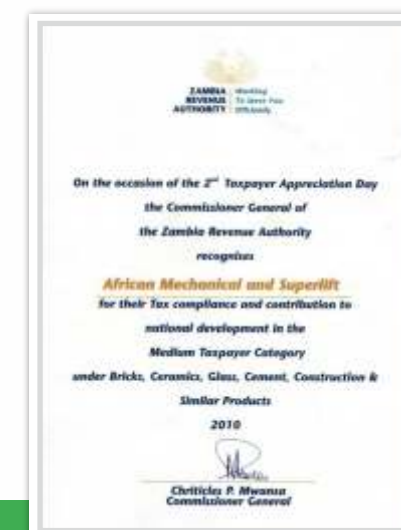
We develop team for identifying quality standards throughout the project to improve processes

Repeatedly worked under stringent quality inspection by Third Party Inspection Agencies e.g. LRIS, TUV, BV etc

We analyze quality data, document opportunities for improvement and apply what was learned from quality analysis to eliminate gaps between current and desired levels of performance.

## GOVERNMENT APPRECIATION

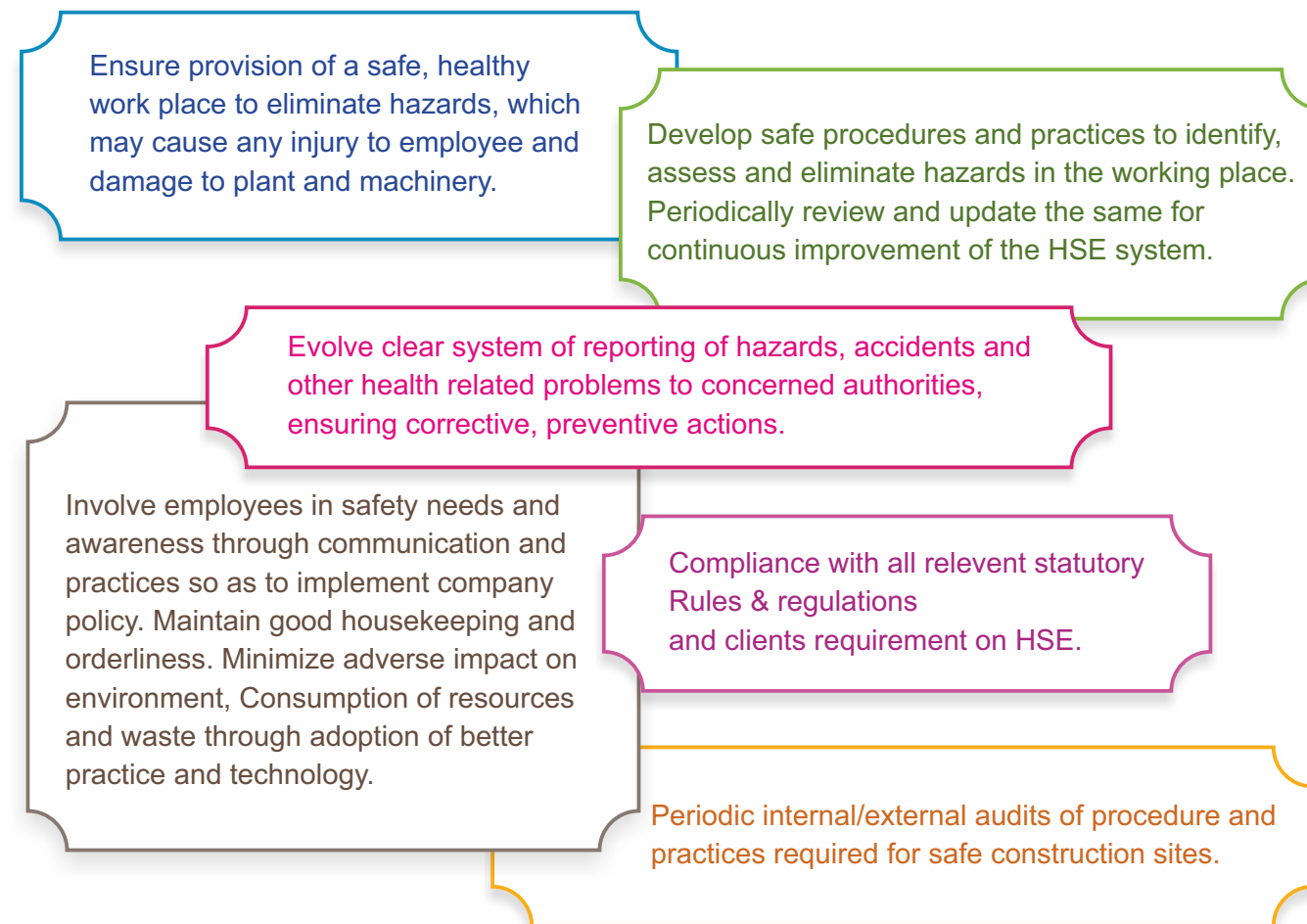
Zambian revenue authority has appreciated our contribution towards national development by paying TAX .



Certificate Of Incorporation

## ENVIRONMENT

Health & Environment protection is a prime concern of our company. We reiterate our intention to establish, implement & maintain a good construction site in terms of Health & Environment system to achieve the following goals.



## GOVERNMENT APPRECIATION



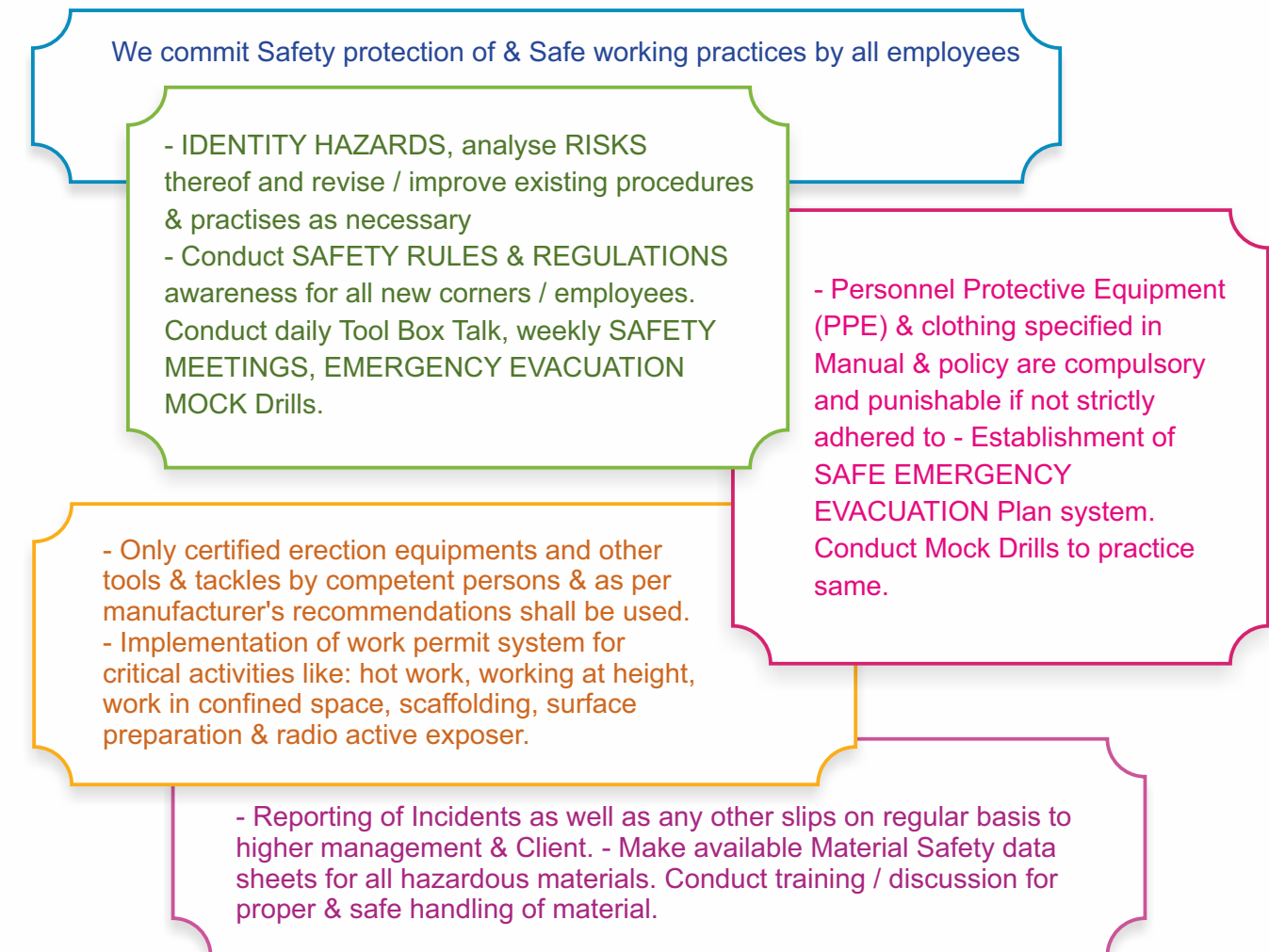
Certificate Of Contractor Registration



Registration Of Engineering Organisation

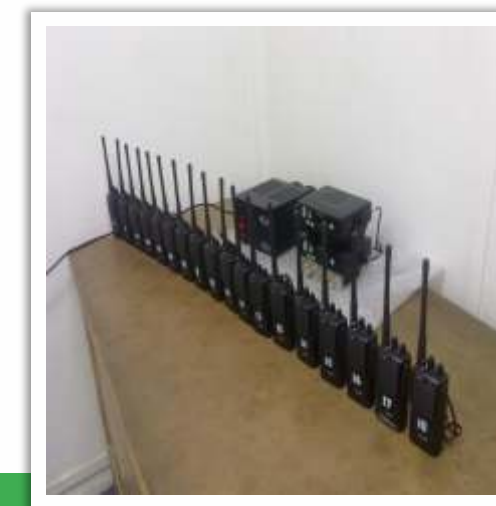
## SAFETY

Our belief is that all accidents are preventable & hence are committed to achieve & sustain ZERO ACCIDENT PERFORMANCE through continuous improvement in work practices:



## SITE COMMUNICATION



For smooth and effective site communications we have provided 2-way radio's to all site engineers which is upgraded with duplex repeater maximum 10KM range.



## CERTIFICATES



## OUR CLIENTS

SN	CLIENT	LOGO
01	Konkola Copper Mines, Zambia	
02	Mopani Copper Mines, Zambia	
03	Ndola Energy Company Ltd, Zambia	
04	FLSmidth (Zambia) Ltd, Zambia	
05	Mining Chemical SPRL, D R Congo	
06	Mutanda Mining SPRL, D R Congo	
07	Ruashi Mining SPRL, D R Congo	
08	CNMC Luanshya Copper Mines PLC, Zambia	
09	MBE Minerals (Zambia) Ltd, Zambia	

## OUR CLIENTS

SN	CLIENT	LOGO
10	Barrick (Australia Pacific) Ltd, Zambia	
11	Warstilla Finland Oy, Zambia	
12	Alstom (John Thomson Division)	
13	Chambishi Metals PLC, Zambia	
14	Polysius Division, ThyssenKrupp Engg (Pty) Ltd, South Africa	
15	Limeco Resources Ltd, P.O Box 30973, Lusaka, Zambia	
16	Scorpio Engineering Pvt Ltd, Scorpio House, 132 Wheeler Road, Cox Town, Bangalore, India	
17	Zambia Railway Limited, P.O Box 35091, Lusaka, Zambia	
18	Lafarge Zambia Plc	

## PHOTO GALLERY



Wash Tanks & Settler Tank @ TD-52, Mopani, Kitwe



Agitated Spin Flash Dryer- Ruashi Mining SPRL



Indo-African Chamber of Commerce & Industry



## PHOTO GALLERY



Work Shop at Kitwe Road, Zambia.



750 TPH Copper Ore Fine Crushing SAG and Ball Mill at Concentrator, Konkola Copper Mines, Zambia



Civil Construction Machinery



Lime kiln for Handyfa's Lime Plant



Mechanical Erection for Handyfa's Lime Plant at Ndola, Zambia

## PHOTO GALLERY



Fabricated bulk head chute for Rocker breaker @ Konkola Deep mining project, Chililabombwe



Cooling Tower & its Piping for Wartsila Project, Zambia



1200 TPH Transfer Conveyors at Concentrator, Konkola Copper Mines, Zambia



Exhaust Gas Stack for 50 MW Power Plant at Ndola Energy Co Ltd, Zambia



Low Noise Radiators for Engine Hall (50 MW Power Plant @ Ndola Energy, Ndola)

## PHOTO GALLERY



FRP & RTRP Piping at Sulphuric Acid Plant,  
Mopani Copper Mines, Mufulira, Zambia



Contact Acid Area at Sulphuric Acid Plant,  
Mopani Copper Mines, Mufulira, Zambia



Coke conveyor for New Smelter @ KCM, Nchanga



Anode Preparation & Cathode Handling Plant at  
Mopani Copper Mines, Mufulira, Zambia



Cooling Towers & Compressors at TLP,  
Konkola Copper Mines, Zambia



Mechanical Erection for Handyfa's Lime  
Plant at Ndola, Zambia

## CONTACT US

### AFRICAN MECHANICAL & SUPERLIFT LTD

P. O. Box : 11152, Plot No. : N - 852, Along Chingola-Kitwe  
Road, Chingola, Republic of Zambia.  
Tel : +260212350973 / +260966170712  
E-mail : amslzambia@gmail.com  
info@amsl-zm.com

### AFRICAN MECHANICAL & SUPER LIFT LTD SARL

849A, Biayi Avenue, Lubumbashi,  
Democratic Republic of Congo  
E-mail: info@amsl-za.com;  
amslconstruction.drc@gmail.com

### AFRICAN MECHANICAL AND SUPERLIFT SA PTY LTD.

Unit 1, 26th, 20th street Page view, Johansberg  
2092, South Africa  
Email : amslsouthafrica@gmail.com  
Mobile : +27798106062

### ONSHORE CONSTRUCTION COMPANY PVT. LTD

27-30, 2nd Floor, Indraprastha Estate, LBS Marg,  
Vikhroli (west), Mumbai - 400 083, Maharashtra, India  
Tel: 0091 - 22 - 6714 0200 / 6714 0300  
Fax: 0091 - 22 - 2577 9613  
E-mail: info@onshoreconstruction.com;  
onshoreconstruction@gmail.com

### ONSHORE CONSTRUCTION LLC

504, AL Maktab Building, AL Barsha 1,  
P. O. Box: 450369, Dubai, UAE  
Tel: 00971 - 43255459  
E-mail: info@ocllc-eim.ae

### ONSHORE CONSTRUCTION CO PVT. LTD

First Floor, Al-majeed Building, Bldg. No. 9, Rezwq  
Al-rashdan Street, Shmesani Jordan  
E-mail: info.jordan@onshoreconstruction.com;  
occpjordan@gmail.com

### SOCIETE ONSHORE CONSTRUCTION SARL AU

3 Etage Apartment, 5 Immeuble No 51 El Firdaous,  
Khouribga, Morocco  
E-mail: info@societeonshore.ma;  
onshoremorocco@gmail.com

### ONSHORE CONSTRUCTION SDN BHD

GL-05, Gr. Fl., POIC Office, Plot 76, Jalan Nibang 4,  
Tanjung Langs at Indl. Complex, 81700, Pair Gudang,  
Johor, Darul Takzim, Malaysia  
E-mail: info@onshoresdnbhd.com;  
onshoremalaysia@gmail.com

### PT. ONSHORE CONSTRUCTION INDONESIA

Wisma Mitra Sunter, J1 Yos Sudarso Street, 12th Flr.,  
Kavling 89, Block C, North Jakarta, Indonesia  
E-mail: info@onshoreindonesia.com;  
onshoreindonesia@gmail.com